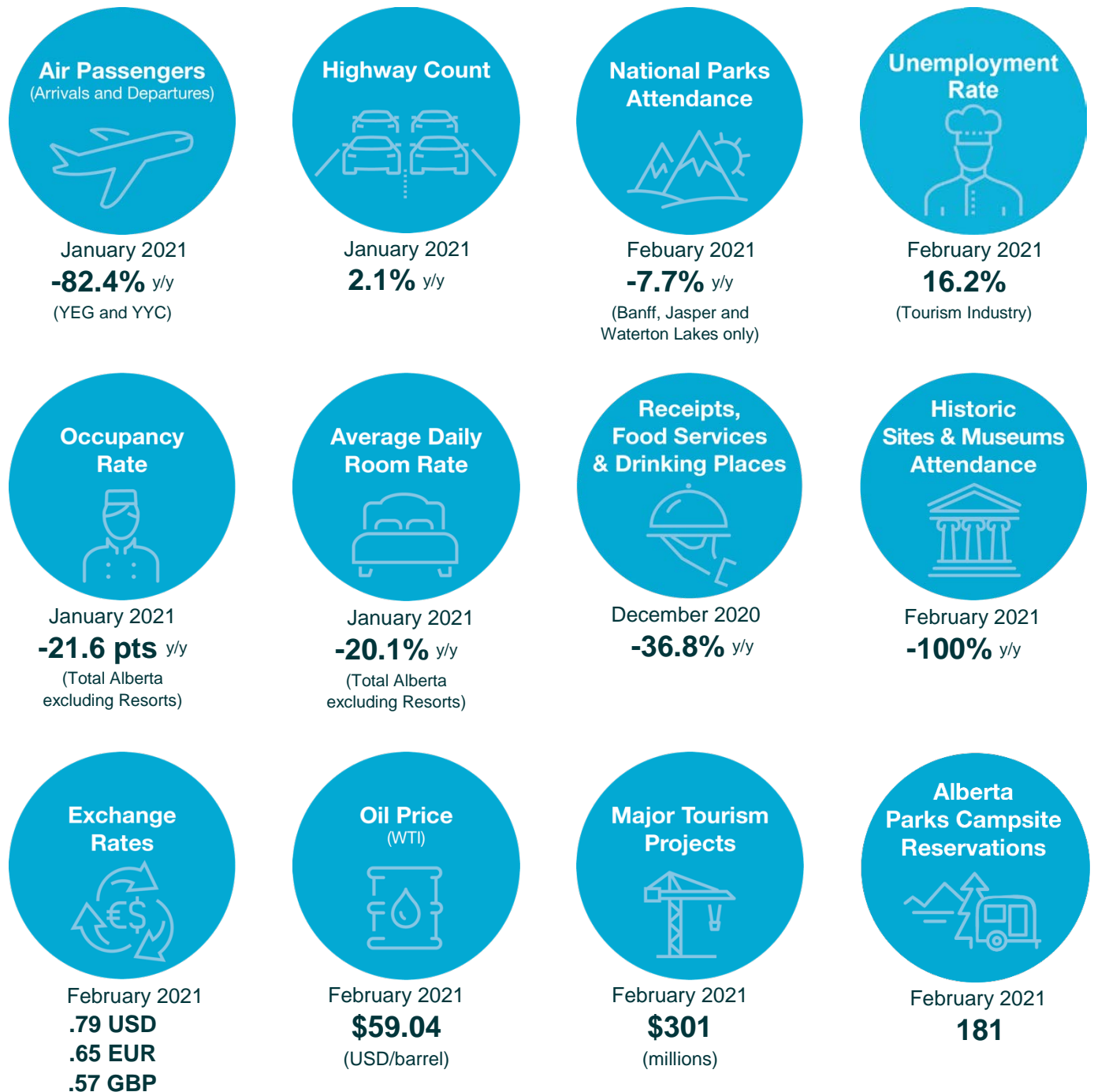


# Alberta Tourism Market Monitor March 2021



Please note: Alberta announced the first case of COVID-19 on March 5 and declared a public health state of emergency on March 17, 2020. All non-essential businesses were asked to close on March 27, 2020. Alberta's phased relaunch began on May 14, 2020. All Parks Canada facilities were temporarily closed from March 25, 2020, and opened for day use on June 1, 2020. All provincial parks closed on March 17 and reopened on May 14, 2020. The Royal Alberta Museum and Royal Tyrrell Museum opened on May 16 and 22, respectively while another five historical sites opened on June 20, 2020. A second public health state of emergency was declared on November 24, 2020. Effective Dec. 13, 2020, some businesses including museums are required to temporarily close, reduce capacity or limit their in-person access.

<https://www.alberta.ca/tourism-industry-market-information.aspx>

©2021 Government of Alberta | Published: March 2021 | For more information, email [tourism.research@gov.ab.ca](mailto:tourism.research@gov.ab.ca)



	Jan.	Feb.	Mar.	Apr.	May	June	July	August	Sept.	Oct.	Nov.	Dec.	Yr-to-Date
Alberta Resorts Occupancy Rate	20.5%												20.5%
Point change from 2020	-29.6												-29.6
Average daily room rate	\$189.46												\$189.46
Variance from 2020	-20.7%												-20.7%
Revenue per available room	\$38.77												\$38.77
Other Alberta* Occupancy Rate	24.1%												24.1%
Point change from 2020	-14.1												-14.1
Average daily room rate	\$103.13												\$103.13
Variance from 2020	-9.7%												-9.7%
Revenue per available room	\$24.89												\$24.89
Total Alberta (excl. Resorts) Occupancy Rate	19.9%												19.9%
Point change from 2020	-21.6												-21.6
Average daily room rate	\$97.28												\$97.28
Variance from 2020	-20.1%												-20.1%
Revenue per available room	\$19.36												\$19.36

#### Accommodation Indices for Selected Cities or Towns<sup>7</sup>

Occ%= Occupancy Rate Room Rate Available Room	January			Year-To-Date				January			Year-To-Date		
	Occ%	ADR	RevPar	Occ%	ADR	RevPar		Occ%	ADR	RevPar	Occ%	ADR	RevPar
Airdrie	21.0	\$81.47	\$17.08	21.0	\$81.47	\$17.08	Banff	18.5	\$173.27	\$32.06	18.5	\$173.27	\$32.06
Bonnyville	26.3	\$79.96	\$21.01	26.3	\$79.96	\$21.01	Canmore	28.3	\$124.67	\$35.24	28.3	\$124.67	\$35.24
Drayton Valley	55.0	\$101.11	\$55.60	55.0	\$101.11	\$55.60	Drumheller	9.5	\$104.49	\$9.96	9.5	\$104.49	\$9.96
Edson	42.7	\$109.72	\$46.84	42.7	\$109.72	\$46.84	Fort Mac	29.1	\$126.19	\$36.72	29.1	\$126.19	\$36.72
Fort Saskatchewan	12.5	\$93.26	\$11.63	12.5	\$93.26	\$11.63	Gr. Prairie	31.1	\$120.26	\$37.43	31.1	\$120.26	\$37.43
High Level	28.3	\$124.43	\$35.22	28.3	\$124.43	\$35.22	Hinton	23.1	\$91.63	\$21.17	23.1	\$91.63	\$21.17
Jasper	32.5	\$151.29	\$49.23	32.5	\$151.29	\$49.23	Leduc	18.3	\$81.43	\$14.86	18.3	\$81.43	\$14.86
Lethbridge	16.7	\$88.62	\$14.80	16.7	\$88.62	\$14.80	Lloydminster	23.8	\$102.94	\$24.51	23.8	\$102.94	\$24.51
Med. Hat	19.5	\$93.56	\$18.27	19.5	\$93.56	\$18.27	Nisku	16.5	\$74.03	\$12.23	16.5	\$74.03	\$12.23
Red Deer	15.5	\$87.42	\$13.58	15.5	\$87.42	\$13.58	Sherwood Pk.	14.9	\$89.34	\$13.34	14.9	\$89.34	\$13.34
Whitecourt	26.6	\$93.93	\$24.95	26.6	\$93.93	\$24.95	Total Alberta	20.3	\$109.38	\$22.21	20.3	\$109.38	\$22.21

Sources: CBRE Hotels Trends in the Hotel Industry National Market Report and STR Inc.

#### Food Services and Drinking Places 2020 (\$ Millions) unadjusted<sup>8</sup>

Total Receipts for Alberta	\$739.16	\$752.61	\$532.16	\$344.93	\$496.75	\$651.67	\$701.05	\$720.13	\$690.75	\$694.18	\$611.63	\$534.44	\$622.45
Per cent change from 2019	0.5%	6.7%	-35.5%	-56.5%	-41.9%	-24.7%	-21.2%	-19.4%	-16.9%	-17.8%	-25.4%	-36.8%	-24.6%

#### Historic Sites and Museums 2021 (000's of visitors)<sup>9</sup>

Visitor Attendance <sup>d</sup>	0.0	0.0											0.0
Per cent change from 2020	-100.0%	-100.0%											-100.0%

#### Exchange Rates 2021<sup>10</sup>

Canadian Dollar / U.S. Dollar (noon)	0.79	0.79											0.79
Canadian Dollar / Euro	0.65	0.65											0.65
Canadian Dollar / British Pounds	0.58	0.57											0.57

#### Oil Price: Western Texas Intermediate (WTI) 2021<sup>11</sup>

Cushing, OK Spot Price (U.S. Dollar per barrel)	52.00	59.04											55.52
---	-------	-------	--	--	--	--	--	--	--	--	--	--	-------

#### Major Tourism Projects Valued \$5 million or Greater 2021 (\$ Millions)<sup>12</sup>

Total Value of Hotel Projects Inventory	\$301	\$301											\$301
---	-------	-------	--	--	--	--	--	--	--	--	--	--	-------

#### Alberta Provincial Parks Campsite Reservations 2021<sup>13</sup>

Reservations made on Reserve.AlbertaParks.ca	62	181											243
--	----	-----	--	--	--	--	--	--	--	--	--	--	-----

Sources: Statistics Canada, Alberta Culture, Multiculturalism and Status of Women, Bank of Canada, WTI, Government of Alberta, Alberta Environment and Parks.

<sup>a</sup> Closed properties were not included. More reference can be found here: [https://f.tlcollect.com/fr2/520/46295/CBRE\\_Hotels\\_Canadian\\_Hotel\\_Industry\\_Outlook.mp4](https://f.tlcollect.com/fr2/520/46295/CBRE_Hotels_Canadian_Hotel_Industry_Outlook.mp4).

<sup>b</sup> Other Alberta includes Lethbridge, Red Deer and other Alberta communities.

<sup>c</sup> Per STR's data reporting guidelines, they only close properties if they were closed for a full calendar month (i.e. March 1 – March 31). If a property was open March 1-14, but closed March 15-31, they would consider that

<sup>d</sup> All historical sites and museums must close effective Dec 13, 2020 due to provincewide mandatory restriction.

**Note: New monthly figures are shown in bold type. Revisions will be bolded.**

**r=revised p=preliminary**

**1. Air Passengers** - Numbers are preliminary estimates of air passenger arrivals and departures at the Edmonton International and Calgary International Airports. Since September 2015, total domestic passengers at Fort McMurray International Airport has been added, which comprise commercial and charter passengers.

Source: Edmonton International Airport, Calgary International Airport and Fort McMurray International Airport websites.

**2. Highway Traffic** - These are monthly totals. The monthly average daily traffic (average number of vehicles per day) is calculated by dividing the monthly total by the number of days in the month passing the counter locations and in the direction indicated for a particular month. Automatic Traffic Recorders count all vehicles by direction. Year to date is a cumulative total for all vehicles.

Source: Alberta Transportation's Automatic Traffic Recorders (ATR). <https://www.alberta.ca/highway-traffic-counts.aspx>

**3. National Park Attendance** - Attendance is reported as the number of visits to National Parks in Alberta. Data are preliminary unless otherwise noted.

Banff National Park and Jasper National Park reflect independent travellers only and do not include people travelling as part of a tour group. Tour group data is included in the annual edition of Market Monitor.

Source: Parks Canada.

**4. Employment Food and Accommodation Sector** - The employment figure represents all persons who worked for pay, profit or unpaid work in the food services and accommodation sector, including businesses or other ventures owned or operated by a related family member(s) during the reference period of the survey. The year-to-date total is an average for the year.

Source: Statistics Canada, Labour Force Survey.

<https://www150.statcan.gc.ca/t1/tbl1/en/tv.action?pid=1410035501>

**5. Tourism Unemployment** - The unemployment rate is calculated as number of unemployed persons expressed as a percentage of the labour force in tourism industry.

Source: Tourism HR Canada.

**6. Accommodation Indices for Major Regions** - Occupancy rates and average daily room rates are based on monthly averages of all reporting hotels, motels and motor hotels in each designated region. Alberta Resorts includes the resort communities of Banff, Lake Louise, Kananaskis, Canmore and Jasper.

Revenue per available room is calculated using the occupancy rate and average daily room rate.

Source: CBRE Hotels Trends in the Hotel Industry National Market Report, with reproduction and use of information subject to CBRE Disclaimer and Restrictions as detailed at

<https://www.cbre.ca/en/real-estate-services/business-lines/valuation-and-advisory-services/hotels-valuation-and-advisory-services/disclaimer>

**7. Accommodation Indices for Selected Cities or Towns** - Destination reports are publications of Smith Travel Research Inc. (STR). Terms and conditions governing the ownership, distribution and use of these Destination Reports and their contents include that no historic data can be published, only current month and year-to-date data.

Source: STR, LLC. Republication or other re-use of this data without the express written permission of STR is strictly prohibited.

**8. Food Services and Drinking Places** - The monthly survey of Food Services and Drinking Places provides estimates of the value of sales and the number of locations of restaurants, caterers, and drinking places by province and by industry at the North American Industry Classification System (NAICS) four-digit level. Includes total receipts from restaurants, caterers and taverns for chain and independent establishments. The target population is the three-digit NAICS level of 722, which includes: full-service restaurants, limited service eating places, special food places and drinking places. The year-to-date total is an average for the year.

Source: Statistics Canada, Food Services and Drinking Places.

<https://www150.statcan.gc.ca/t1/tbl1/en/tv.action?pid=2110001901>

**9. Historic Sites and Museums** - Visitor attendance figures are monthly totals based on 18 historic sites and museums. The Royal Alberta Museum opened on Oct 3, 2018 after closure on December 6, 2015. Data for Brooks Aqueduct is no longer collected starting June 2018.  
Source: Alberta Culture, Multiculturalism and Status of Women.

**10. Exchange Rate** - This is the average monthly exchange rate.  
Source: Bank of Canada.

<https://www.bankofcanada.ca/rates/exchange/monthly-exchange-rates/>

**11. Western Texas Intermediate** - This is the average monthly oil price.  
Source: Cushing, OK WTI Spot Price FOB.

<https://www.eia.gov/dnav/pet/hist/LeafHandler.ashx?n=PET&s=RWTC&f=M>

**12. Major Hotel Projects in Alberta** - This is the inventory of hotel projects in Alberta, including new hotels and renovations valued at \$5 million or greater. It is not a complete list of hotel projects. The project stages included in the reported number are: announced, under construction and completed. If the project is completed, it will be removed from the inventory after 30 days from completion. More information on other tourism and recreation projects is available on the website provided below.

Source: Government of Alberta. <http://majorprojects.alberta.ca/>

**13. Alberta Provincial Parks Campsite Reservations** - Individual campsites, group camping areas, comfort camping and backcountry camping reservations are included. Note that reservation statistics reflect the month the reservation was made, and not the date of stay. Only sites available on the Reserve.AlbertaParks.ca are captured. Non-reservable sites that are First Come First Served and sites available for phone-in reservation only are not captured and thus not reflected.

Source: Alberta Environment and Parks.

March 2021